

# What's next?

Thanks for bringing \_\_\_\_\_ in to see us. We performed a test that screens for mature heartworm infections, as well as a number of infections transmitted by ticks.

We want you to know that \_\_\_\_\_ tested positive for antibodies to **ehrlichiosis**. Let's talk about what's next.

## Test results



### No heartworm detected!

We didn't find any evidence of heartworms today. Heartworms are transmitted when an infected mosquito bites your dog. The adult worms live in your dog's heart and the blood vessels of the lungs.



### No Anaplasma detected!

We didn't find any evidence of antibodies to anaplasmosis today. Anaplasmosis is a bacterial infection transmitted by ticks. The test we performed screens for two bacterial species that can cause anaplasmosis.



### No Lyme detected!

We didn't find any evidence of Lyme infection today. Lyme disease is a bacterial infection transmitted by ticks.



### Ehrlichia detected!

\_\_\_\_\_ tested positive for antibodies to ehrlichiosis. This is a bacterial infection transmitted by ticks. The test we performed screens for two bacterial species that can cause ehrlichiosis.

## We are here to help, so call us if you have questions.

In good health,  
Your friends at

## Next steps: We have a plan!

Finding out \_\_\_\_\_ has a positive result can be concerning. That's why we built a simple plan to determine if treatment is needed.

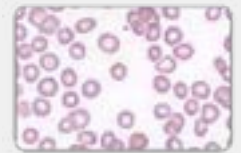
### Step 1: What does this mean?

- + \_\_\_\_\_ was bitten by a tick that carried the bacteria that causes ehrlichiosis. We now know that antibodies to ehrlichiosis were found in the blood sample, which may be due to a previous or current infection.
- + Though dogs often display no clear signs of ehrlichiosis, this dangerous infection may cause decreased appetite, lameness, fever, bruising, swollen joints, and even kidney or eye disease.
- + Rest assured, \_\_\_\_\_ cannot directly transmit symptoms consistent with ehrlichiosis to you or your family.

### Step 2: Does need treatment?

We need to investigate if \_\_\_\_\_ should be treated for ehrlichiosis. Thankfully, one or two simple tests can help us make this decision.

- + Complete blood count to evaluate:
  - + Platelets
  - + Red blood cells
  - + White blood cells
  - + Immune response
- + Chemistry panel to evaluate for kidney disease



Let's discuss what next tests are most appropriate. Give us a call so we can make a plan together.

### Step 3: What does treatment look like?

If the follow-up tests indicate \_\_\_\_\_ would benefit from treatment, we will prescribe a long course of an antibiotic. Sometimes additional treatments may be necessary, depending on how the rest of the body has been impacted by ehrlichiosis.

### Step 4: What can I do next?

- + We'll continue to include a screening test for \_\_\_\_\_ during annual checkups as signs of disease can be hard to detect.
- + It's also important to ensure \_\_\_\_\_ is protected with flea and tick prevention year-round.
- + Keep up regular tick checks—be sure to look around the ears, under the tail, in the armpits, and between the toes! And equally as important, check your human family members as these same ticks can infect them as well.

